

# Remi Geometric

\$609,291

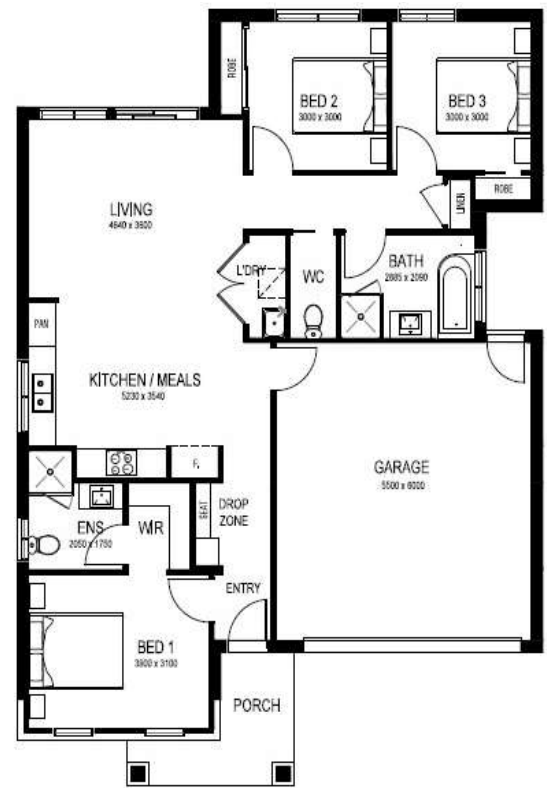
## Lot 311 Nicholas Esplanade



BED	3	HOUSE SIZE	16.03 sq
BATH	2	FRONTAGE	14
GARAGE	2	LAND SIZE	290m2

## INCLUSIONS

- Fixed site costs & developer guidelines
- 7-star energy guaranteed on all orientations
- Colorbond roof
- Water resistant laminate & upgraded carpet throughout
- 20mm mineral surface benchtops to kitchen & bathrooms
- All electric & 3.5kw solar included
- LED downlights to all living areas
- Two split systems & entire home heating



mayde.

Raman Kumar

**E** raman.kumar@maydehomes.com.au

**P** 0484 073 435

*Matilda*  
DONNYBROOK

DATE 15/04/25

Image for illustrative purposes only. Pricing excludes landscaping, fencing, driveway. Floorplan areas may vary slightly in size depending on facade selection. Floorplans shown are not to scale. Floorplan may be mirrored to suit garage crossover location. Subject to Developer approval. Price effective for 1 month from date of issue.