

mayde.



Home Designs

Dreams, memories, life mayde.



At Mayde, we're making first homebuyers' dreams a reality, helping them forge core memories they'll recount for decades to come, and build a life that feels like the plot of a fairytale.

You might not know it yet, but you'll look back on the first night in your new home, eating pizza from paper plates, as a core memory. And as partners in the home-building process, we're here to help you make it happen. Pizza and all.



**Home sweet,
glorious,
comfortable,
snug home.**

1.

We're made for firsts

Dedicated to first-home buyers, we're well equipped to navigate the waters you might be unfamiliar in.

We'll guide you from that first spark of interest to the first night in your shiny new place.

2.

We're professional untanglers

You won't be overwhelmed with jargon or buzzwords.

Instead, we're here to make the building process as smooth and simple as possible. That way, the journey is empowering, rather than confusing.

3.

We cater to the shape of your life

Life comes in different shapes and sizes. That's why our home plans are flexible, we encourage personalisation, and we'll help you sort everything from finance, to land, to space for your extensive vintage poster collection.

4.

What you see is what you get

When you build with Mayde, you know exactly what you're signing up for. All the requirements are included – so you won't find us burying rogue clauses in the fine print.

Our range of house plans are crafted specifically with first homeowners in mind. Because the best plans aren't just drawn, they lead you home.



Home Designs

Index

Home Design	Block Width (m)	Block Length (m)	House Width (m)	House Length (m)	Beds	Bath	Living	Garage	Alfresco	Total Area (sqm)
Archer	8.5	21	8.5	15.73	3	2	1	1	N	110.6
Finley	8.5	25	8.5	19.53	3	2	1	1	N	133.61
Carter	8.5	28	8.5	20.63	4	2	1	1	N	143.73
Kiara	10.5	21	10.5	15.42	2	2	1	2	N	138.42
Harlow	10.5	25	10.5	19.6	4	2.5	1	2	N	167.02
Otis	10.5	28	9.35	22.53	4	2	1	2	Y	174.21
Remi	12.5	21	11.3	15.6	3	2	1	2	N	148.9
Miller	12.5	21	11.37	15.37	3	2	1	2	N	150.38
Delilah	12.5	25	11.17	18.89	4	2.5	2	2	N	184.1
Avery	12.5	28	11.1	21.53	4	2.5	2	2	Y	206.44
Lenny	12.5	28	11.17	21.41	4	2.5	2	2	Y	210.72
Tate	12.5	30	11.1	23.6	4	2	2	2	Y	221.93
Bodhi	14	28	12.67	20.8	4	2.5	2	2	Y	238.41
Frankie	14	30	12.67	21.6	4	2.5	2	2	Y	245.43
Hazel	14	32	12.67	23.26	4	2.5	3	2	Y	261.93



Archer

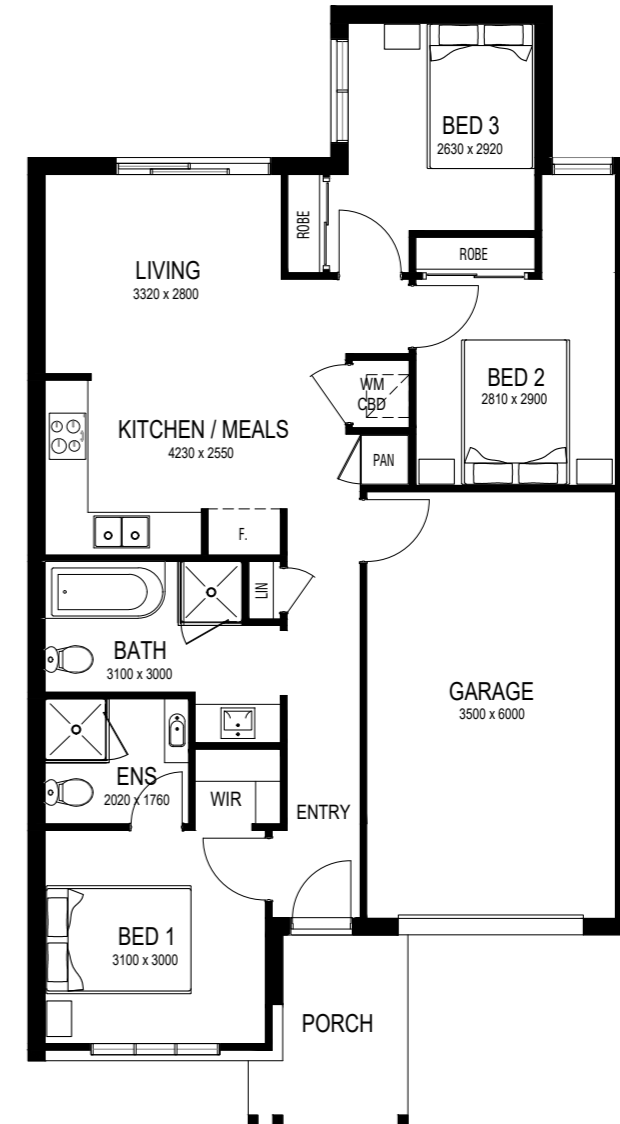
Minimalist

Pinch yourself. With the Archer, you've got your own garage, two bathrooms and over 100 square metres of space that's entirely your own.

The three bedrooms and option for an alfresco area are begging for summer evenings hosted outdoors, where guests have the option to stay over if they please.

Or, really lean into the minimalist style and decide to include only two bedrooms. Who knew choice could feel so freeing?

Talk to our talented team or head to our website to discover how else you can personalise Archer.



Specifications



Minimum Lot Size
8.5m x 21m
Total Area
110.60sqm

House Width 8.50m
House Length 15.73m
House Size 110.60sqm

Finley

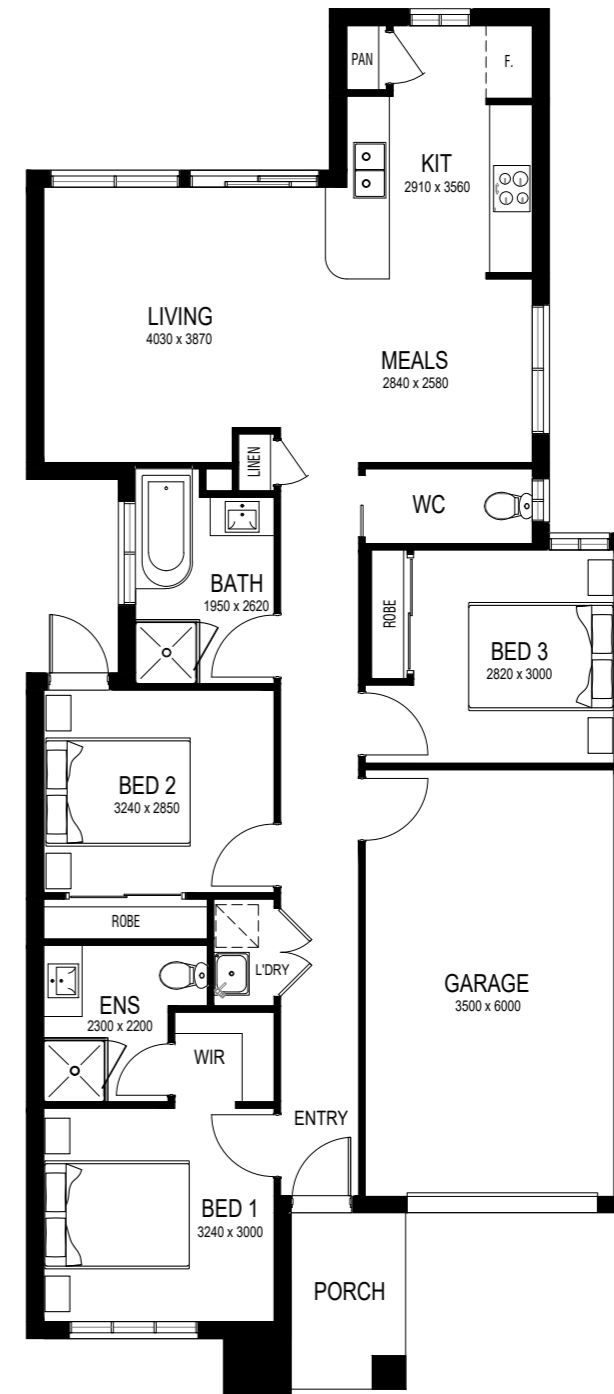
Geometric

Take it all in. All three bedrooms, two bathrooms and your own dedicated garage.

That's not to mention the choice of adding ducted heating and cooling, an alfresco for outdoor living, and your oh-so-fancy powder room.

It's no coincidence that fin means 'finished'. Here, life is truly complete.

Talk to our talented team or head to our website to discover how else you can personalise Finley.



Specifications



Minimum Lot Size
8.5m x 25m

Total Area
133.61sqm

House Width 8.50m

House Length 19.53m

House Size 133.61sqm

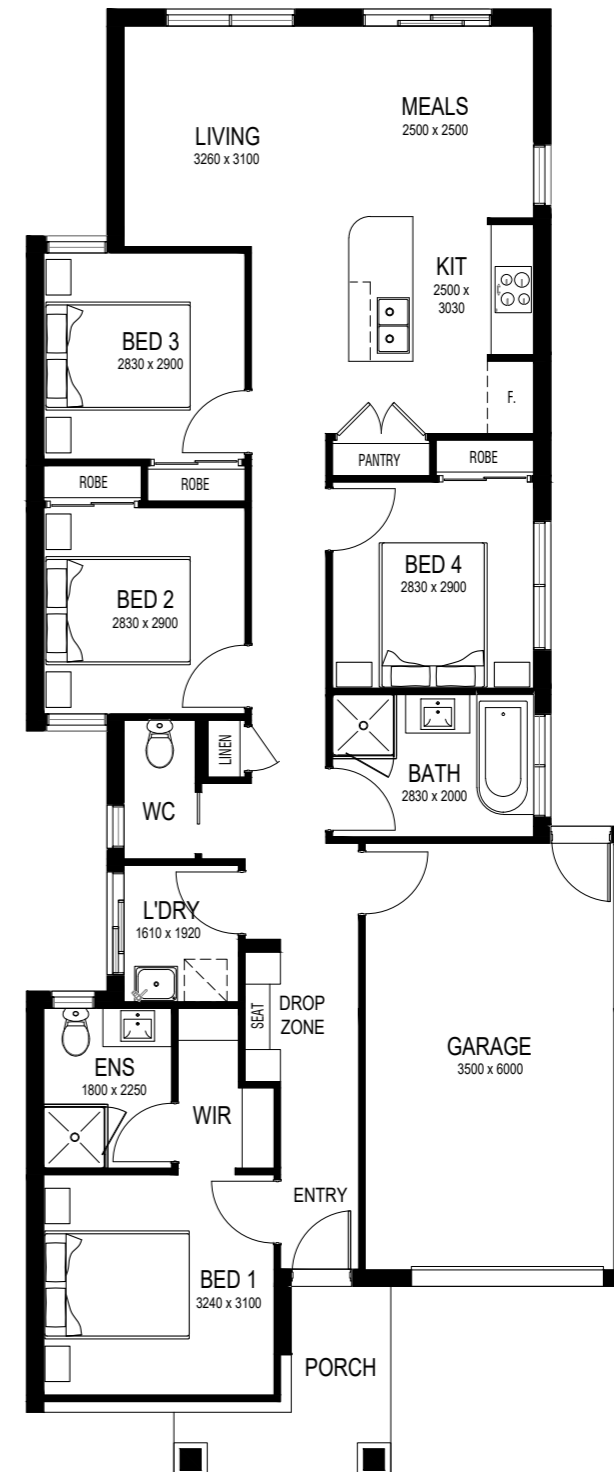
Carter

Hamptons

What's impressive about Carter? Despite being perfect for narrow blocks, it doesn't sacrifice a single thing. If you need proof, how does four bedrooms and two bathrooms sound...

And if you're feeling ultra-Hamptons, add a walk-in pantry, alfresco and ducted heating and cooling to really take things up a notch.

Talk to our talented team or head to our website to discover how else you can personalise Carter.



Specifications



Minimum Lot Size
8.5m x 28m

Total Area
143.73sqm

House Width 8.50m

House Length 20.63m

House Size 143.73sqm

Kiara

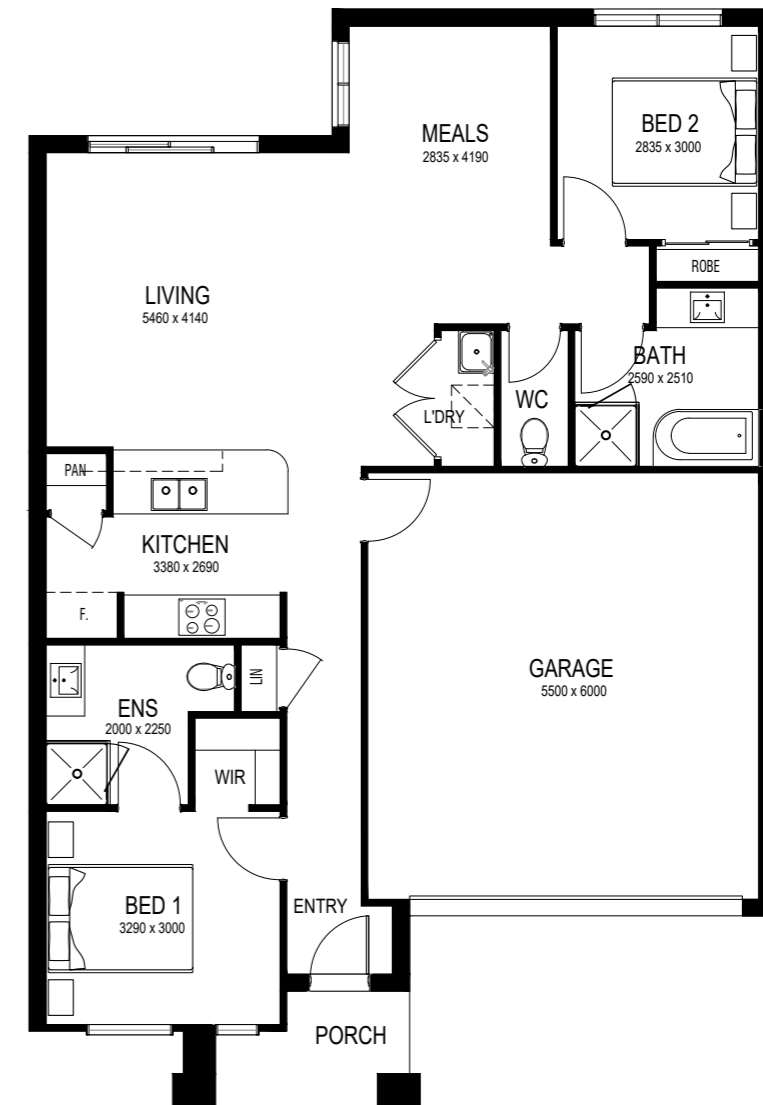
Linear

Twos fit so neatly into everything. And in Kiara, you've got a neat two bedrooms, two-car garage and dual bathrooms.

If that's simply not enough though, you've got the option to add a bedroom. On the other hand, if it's too much, you can also downsize the garage to fit a single vehicle and enjoy the extra space in your interior.

On the topic of choice, you might like to know that an alfresco, laundry and ducted heating and cooling are also up for grabs. Because, why not?

Talk to our talented team or head to our website to discover how else you can personalise Kiara.



Specifications



Minimum Lot Size
10.5m x 21m

Total Area
138.42sqm

House Width 10.50m

House Length 15.42m

House Size 138.42sqm

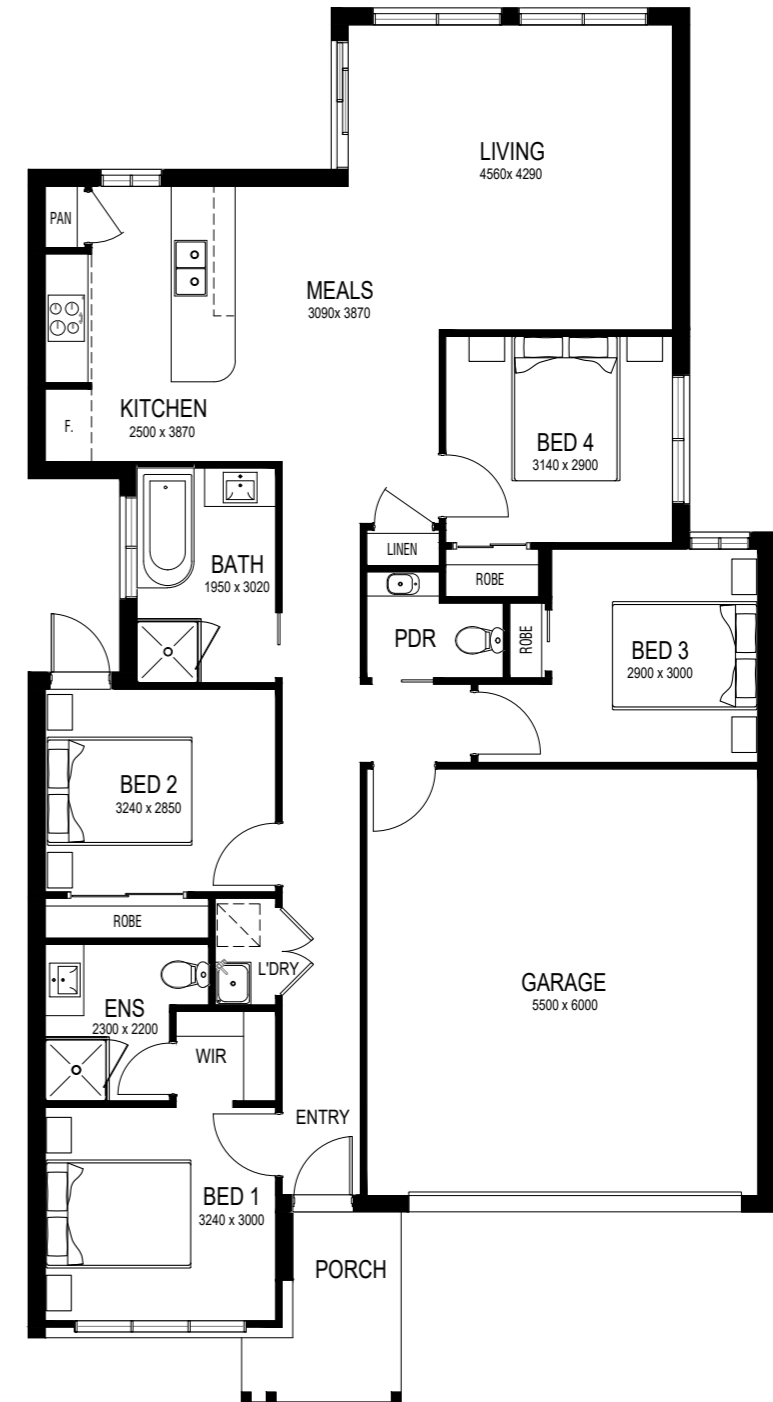
Harlow

Minimalist

Harlow takes you into dream home territory. But here, you can say goodbye to the “could we” and “should we” questions and hello to four bedrooms, two bathrooms, a powder room and laundry.

Variety is the spice of life, so you can also swap to three bedrooms and use the extra room for your front lounge or literally live large in your living area/meal space.

Talk to our talented team or head to our website to discover how else you can personalise Harlow.



Specifications



Minimum Lot Size
10.5m x 25m
Total Area
167.02sqm

House Width 10.50m
House Length 19.60m
House Size 167.02sqm

Otis

Classic

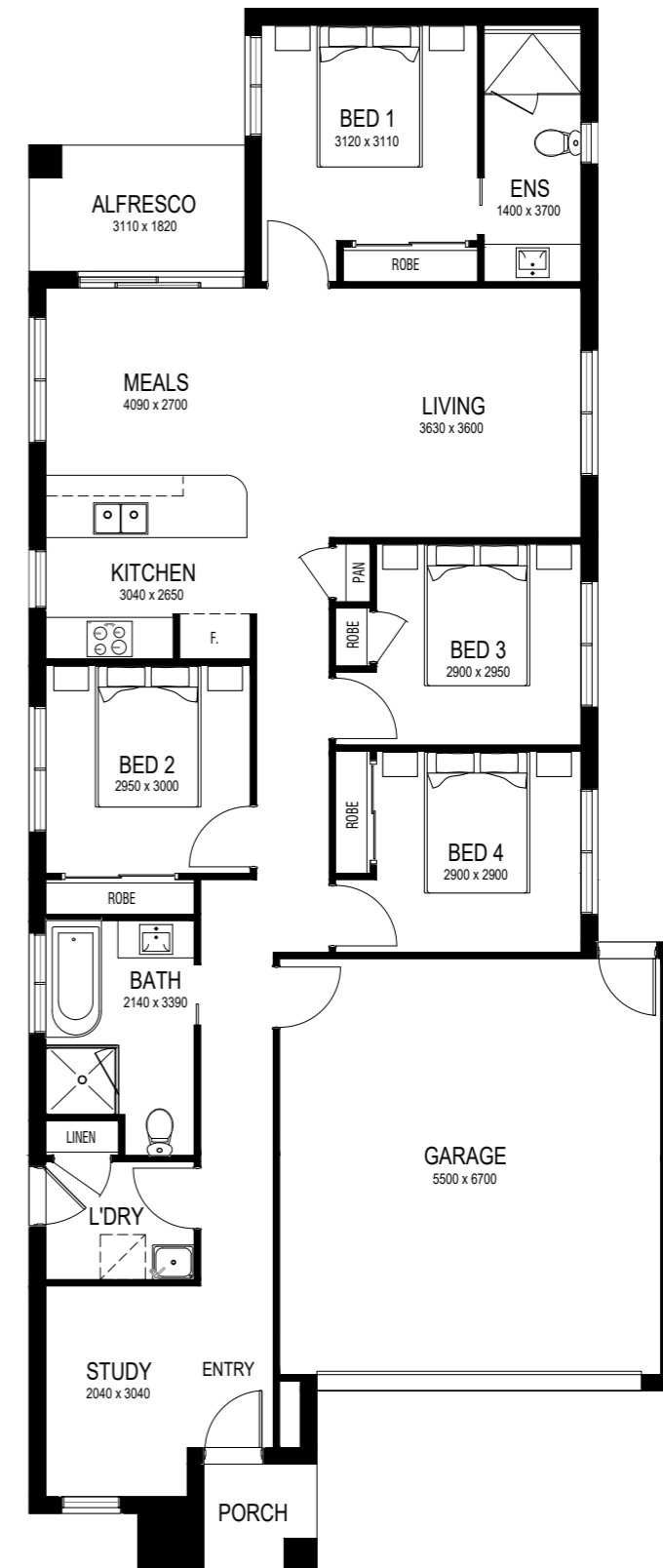
With an alfresco area, four bedrooms, study space and multi-car garage, Otis is the fantasy home of your childhood dreams.

Prefer a little extra living space? Swap out a bedroom. Want ultimate comfort? Add ducted heating and cooling. Feeling bold? Opt for an alternative kitchen layout. With Otis, the possibilities are as exciting as the home itself.

Talk to our talented team or head to our website to discover how else you can personalise Otis.



ARTIST IMPRESSION



Specifications



Minimum Lot Size
10.5m x 28m
Total Area
174.21sqm

House Width 9.35m
House Length 22.53m
House Size 174.21sqm

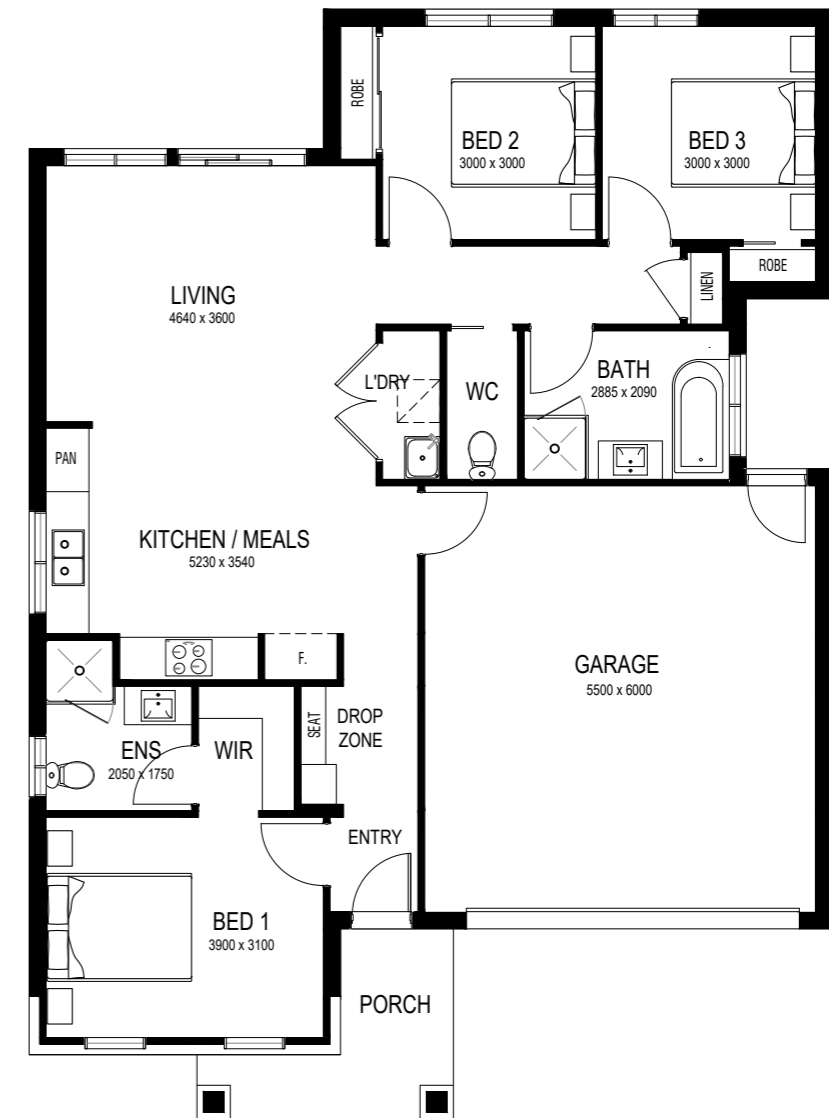
Remi

Hamptons

Remi puts the 'space' in 'spacious'. Between your two-car garage, three bedrooms, two bathrooms and open-plan living, you can lose yourself in the glory of having a home you're truly proud of.

This design also offers the chance to connect your laundry to your garage, add an island bench and walk-in pantry – because why should storage be limited only to built-in robes and linen cupboards?

Talk to our talented team or head to our website to discover how else you can personalise Remi.



Specifications



Minimum Lot Size
12.5m x 21m
Total Area
148.90sqm

House Width 11.30m
House Length 15.60m
House Size 148.90sqm

Miller

Linear

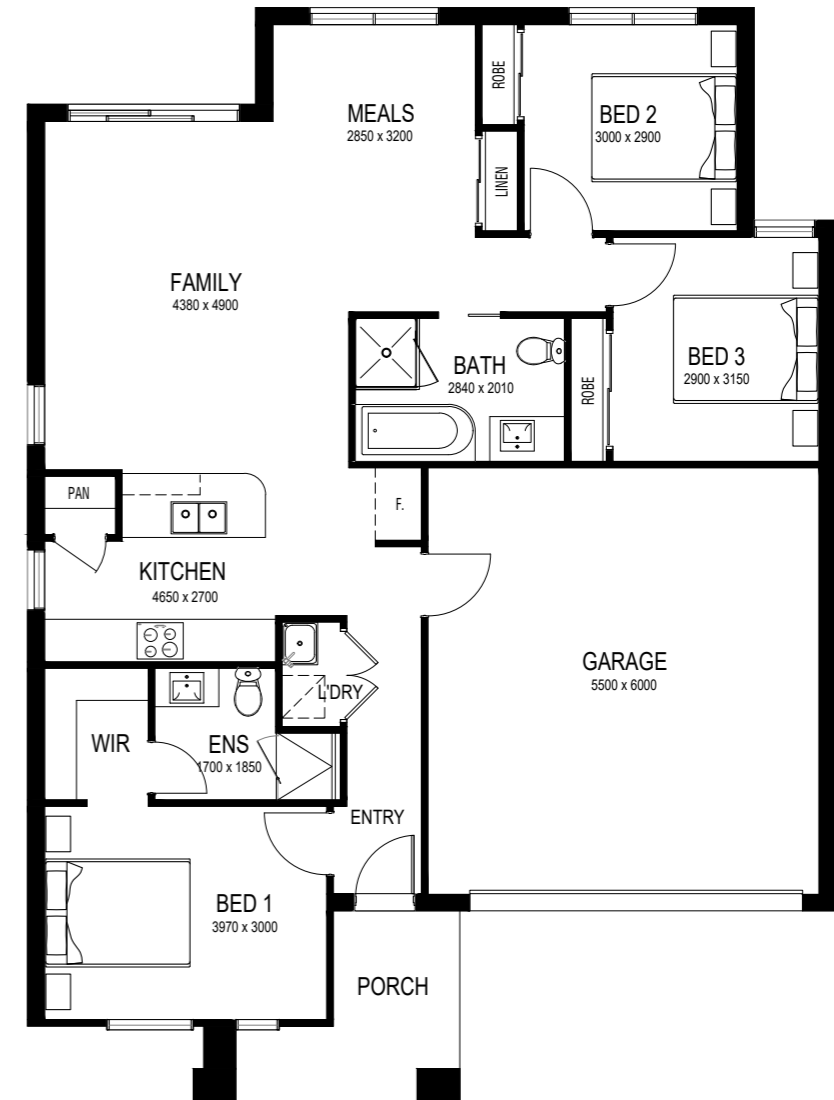
Meet Miller, a relaxing space with room to grow, change or simply muse over the fact that you get to call this beauty "home".

Three bedrooms, two bathrooms and an extensive living space makes it perfect for families (or families-to-be). And if change is on the cards, choose another bedroom, swap the dual-car garage for a single one or bring the outdoors in with an alfresco area.

Talk to our talented team or head to our website to discover how else you can personalise Miller.



ARTIST IMPRESSION



Specifications



Minimum Lot Size
12.5m x 21m
Total Area
150.38sqm

House Width 11.37m
House Length 15.37m
House Size 150.38sqm

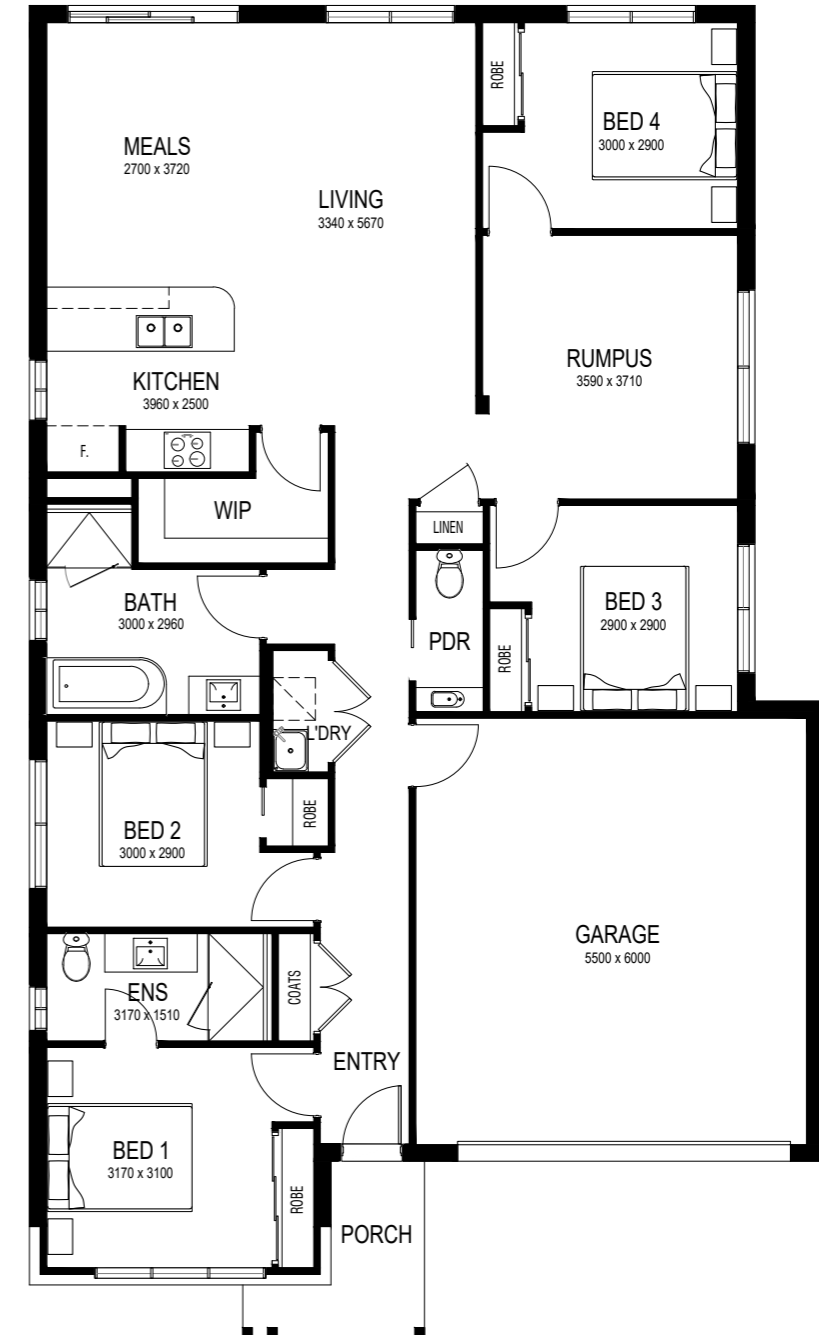
Delilah

Minimalist

Delilah is the type of residence to make a powder room, island bench, walk-in pantry and two-car garage attainable. That's not even to mention the four bedrooms, separate laundry and option to add in an alfresco for outdoor living.

Here, big dreams are really just your everyday.

Talk to our talented team or head to our website to discover how else you can personalise Delilah.



Specifications



Minimum Lot Size
12.5m x 25m
Total Area
184.10sqm

House Width 11.17m
House Length 18.89m
House Size 184.10sqm

Avery

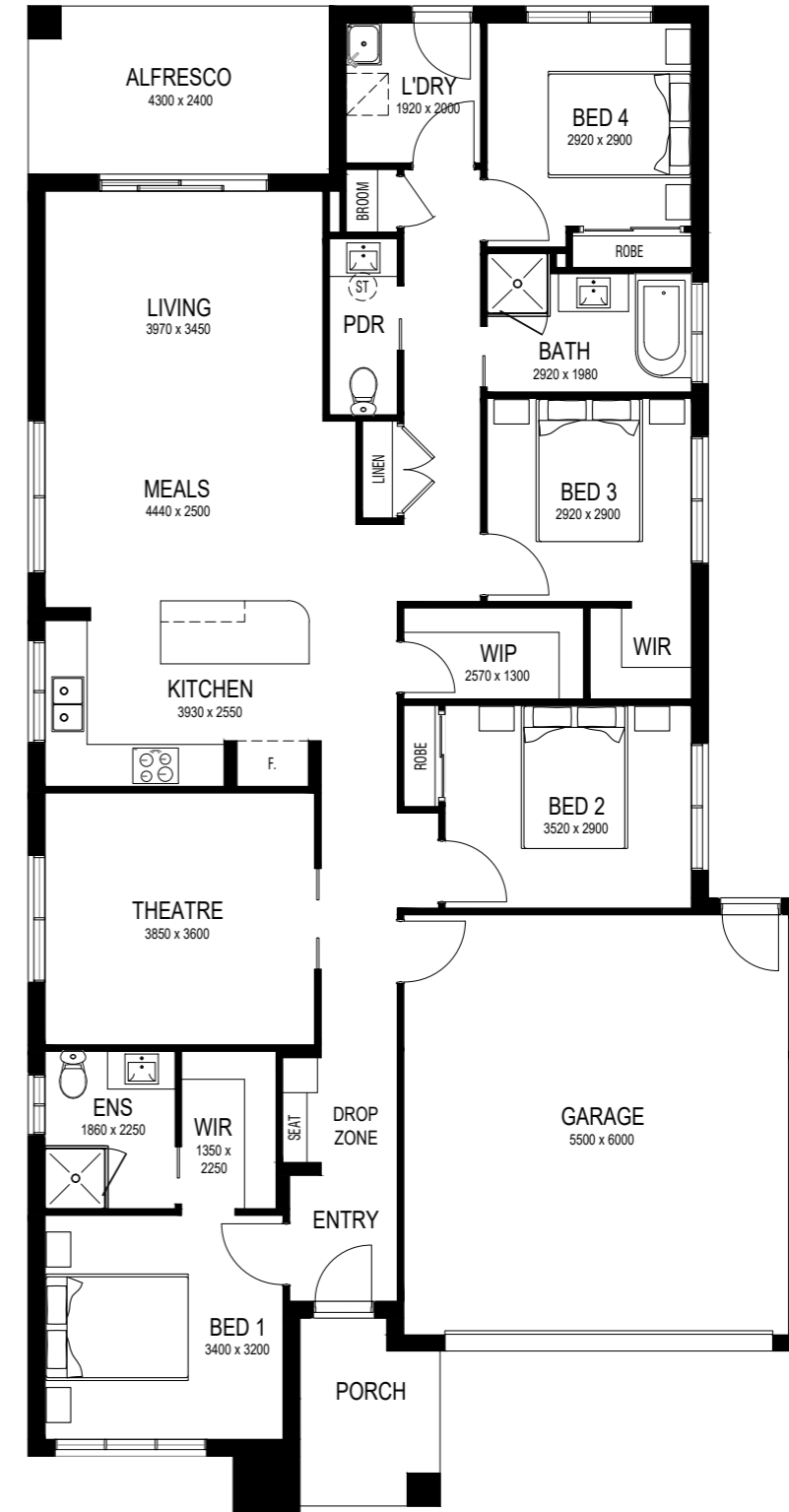
Geometric

Avery is where life comes alive. If you've ever envisioned a place with a home theatre, alfresco and walk-in pantry, it's time to shortlist Avery.

The four bedrooms, two bathrooms and a powder room balance privacy with family connection.

Still dreaming of more? Add a study, ducted heating and cooling or a grand master bedroom suite for a not-so-little touch of luxe.

Talk to our talented team or head to our website to discover how else you can personalise Avery.



Specifications



Minimum Lot Size
12.5m x 28m
Total Area
206.44sqm

House Width 11.10m
House Length 21.53m
House Size 206.44sqm

Lenny

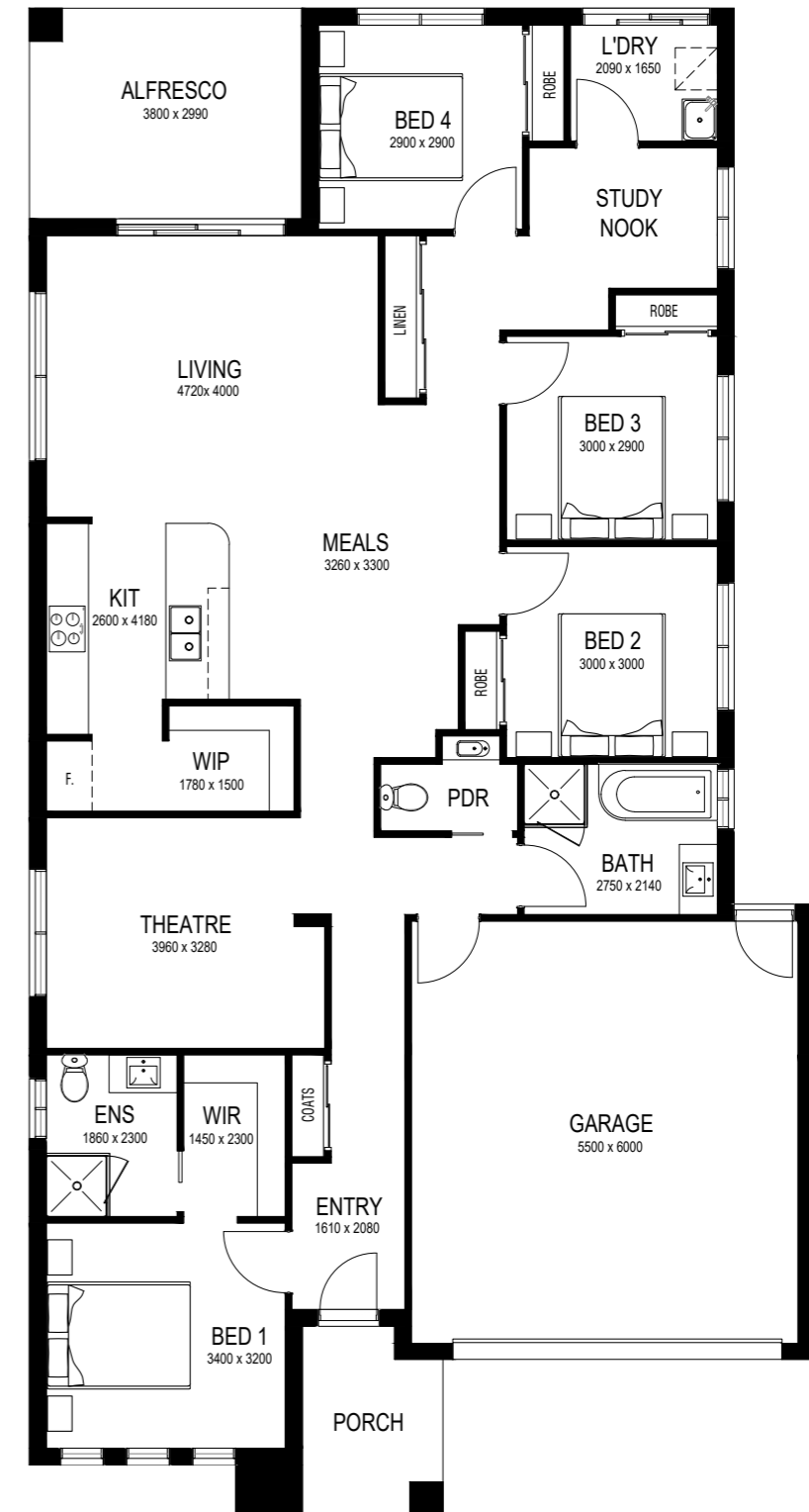
Classic

Lenny is the Great Australian Dream personified. From the welcoming front porch through to the home theatre. It's more than just your average home.

The two and a half bathrooms, four bedrooms, walk-in robes, ample storage and two-car garage perfectly serve a growing (or grown!) family.

Lenny is where your heart will reside.

Talk to our talented team or head to our website to discover how else you can personalise Lenny.



Specifications



Minimum Lot Size

12.5m x 28m

Total Area

210.72sqm

House Width

11.17m

House Length

21.41m

House Size

210.72sqm

Tate

Linear

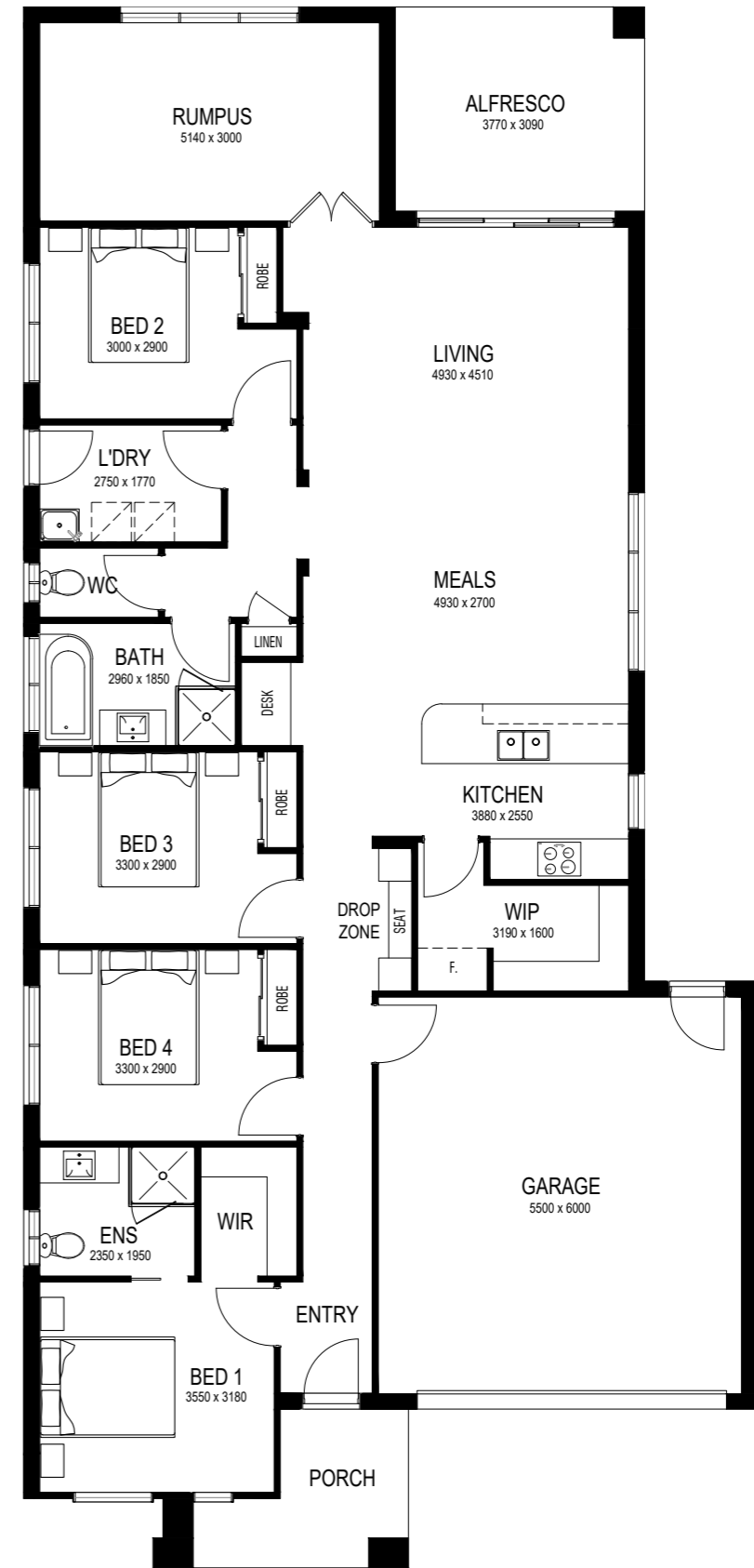
When you decide on a design like Tate, you're choosing a spacious home with the lot. Across its 200+ square metres, it offers two bathrooms, a laundry, a rumpus room, alfresco, walk-in pantry and four bedrooms – with the chance to make it five.

If you'd like to customise, move the first bedroom to the rear or add ducted heating and cooling. The list of possibilities is near endless.

Talk to our talented team or head to our website to discover how else you can personalise Tate.



ARTIST IMPRESSION



Specifications



Minimum Lot Size
12.5m x 30m
Total Area
221.93sqm

House Width 11.10m
House Length 23.60m
House Size 221.93sqm

Bodhi

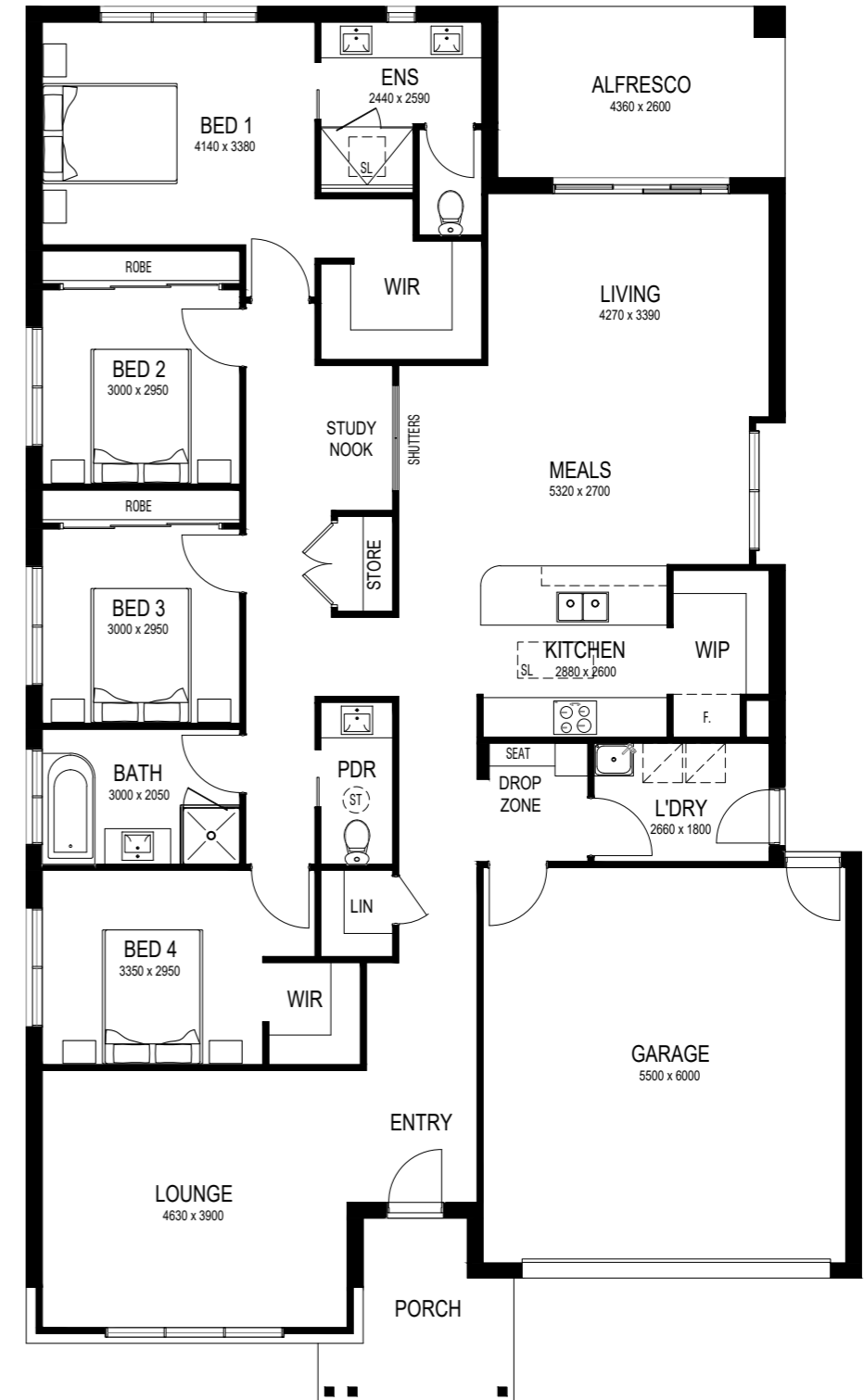
Minimalist

Step onto the porch at Bodhi and you'll sense the possibilities just brimming beyond the door.

Whether it's unwinding in one of the four bedrooms, enjoying sunshine on the alfresco or savoring your family's favourite meal in the living area, Bodhi really gives you that 'I've made it' feeling.

Relish in what it means to have your own walk-in robe, throw open the doors to your meals area for a fresh summer breeze, or lap up all your extra time in the morning thanks to the dual sink in the ensuite.

Talk to our talented team or head to our website to discover how else you can personalise Bodhi.



Specifications

4 2.5 2

Minimum Lot Size
14m x 28m

Total Area
238.41sqm

House Width 12.67m

House Length 20.80m

House Size 238.41sqm

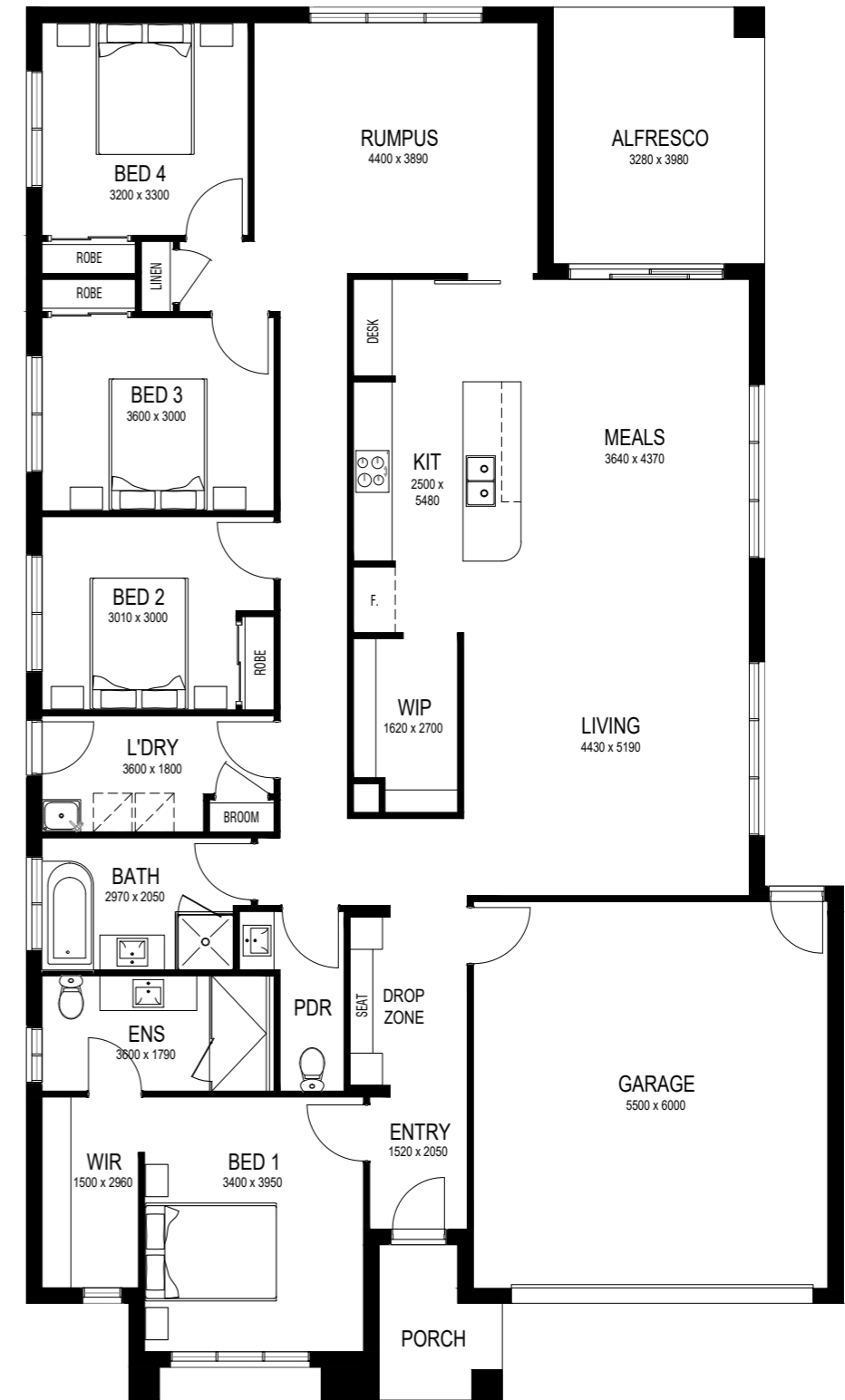
Frankie

Urban

When you're coming home to Frankie, you know you've made the right choice. Sink into any one of the four or five bedrooms, freshen up in the powder room, ensuite or bathroom, and enjoy dinner with loved ones while you share stories of the day in the meals and living area.

Take it further with a butler's pantry, ducted heating and cooling or a porch extension with a planter box for that extra touch of charm.

Talk to our talented team or head to our website to discover how else you can personalise Frankie.



Specifications



Minimum Lot Size
14m x 30m
Total Area
245.43sqm

House Width 12.67m
House Length 21.60m
House Size 245.43sqm

Hazel

Urban

Home is where Hazel is. And that's not just because it features four bedrooms, an alfresco, two-car garage and home theatre. It's also because you're offered the choice of adding a bedroom, choosing ducted heating and cooling, moving the lounge to the front, swapping your walk-in pantry for a butler's pantry and extending the porch.

If that wasn't enough flexibility though, there are also other optional upgrades that make the thought of Hazel as a home a truly thrilling one.

Talk to our talented team or head to our website to discover how else you can personalise Hazel.



Specifications



Minimum Lot Size
14m x 32m
Total Area
261.93sqm

House Width 12.67m
House Length 23.26m
House Size 261.93sqm

Each of our six facade options is available for any home design. To put it simply, you can have your cake and eat it too.

Home Facades





Classic



Urban



Geometric



Minimalist



Hamptons



Linear

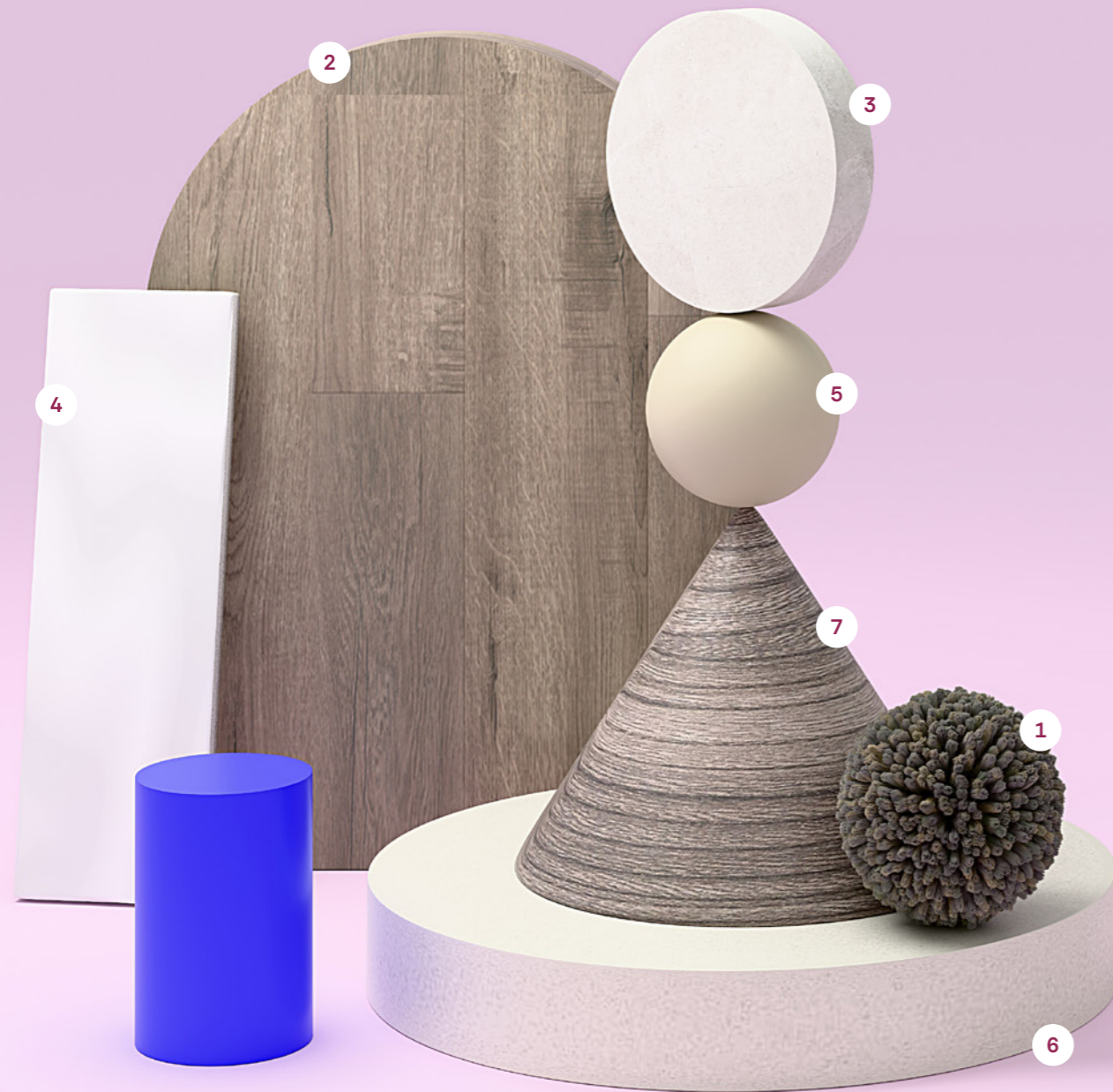
Premium

Bring your home to life with colours and finishes that suit it to a tee. Our expert team of design specialists and palette whizzes have created five internal and five external finish schemes - so every space will sing.

Colour & Finishes



Internal Walnut.



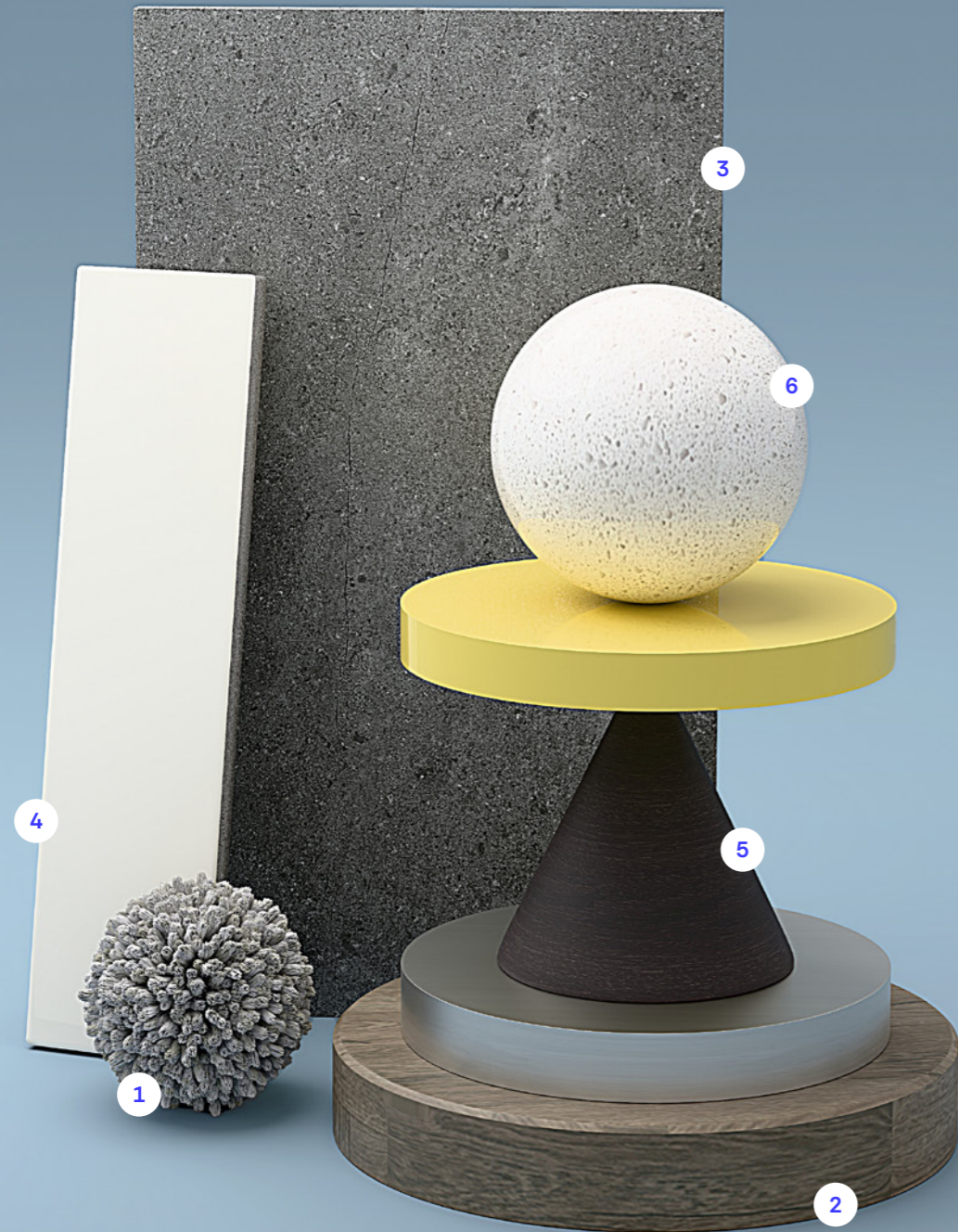
- | | | |
|----------------------------|---|---|
| 1 Carpet
Fudge | 3 Floor & Wall Tile
Omniform Beige Matt Tile | 5 Kitchen Joinery
Alpine Mist |
| 2 Timber Flooring
Otway | 4 Kitchen & Laundry Splashback
Craft White Matt Tile | 6 Kitchen & Bathroom Benchtop
Caesarstone Osprey |
| | | 7 Drop Zone Joinery
Lustrous Elm |

Internal Juniper.



- | | | |
|-------------------------------|---|---|
| 1 Carpet
Armor | 3 Floor & Wall Tile
Omniform White Matt Tile | 5 Kitchen Joinery
Ghostgum |
| 2 Timber Flooring
Newhaven | 4 Kitchen & Laundry Splashback
Craft White Matt Tile | 6 Kitchen & Bathroom Benchtop
Caesarstone Oyster |

Internal Coco.



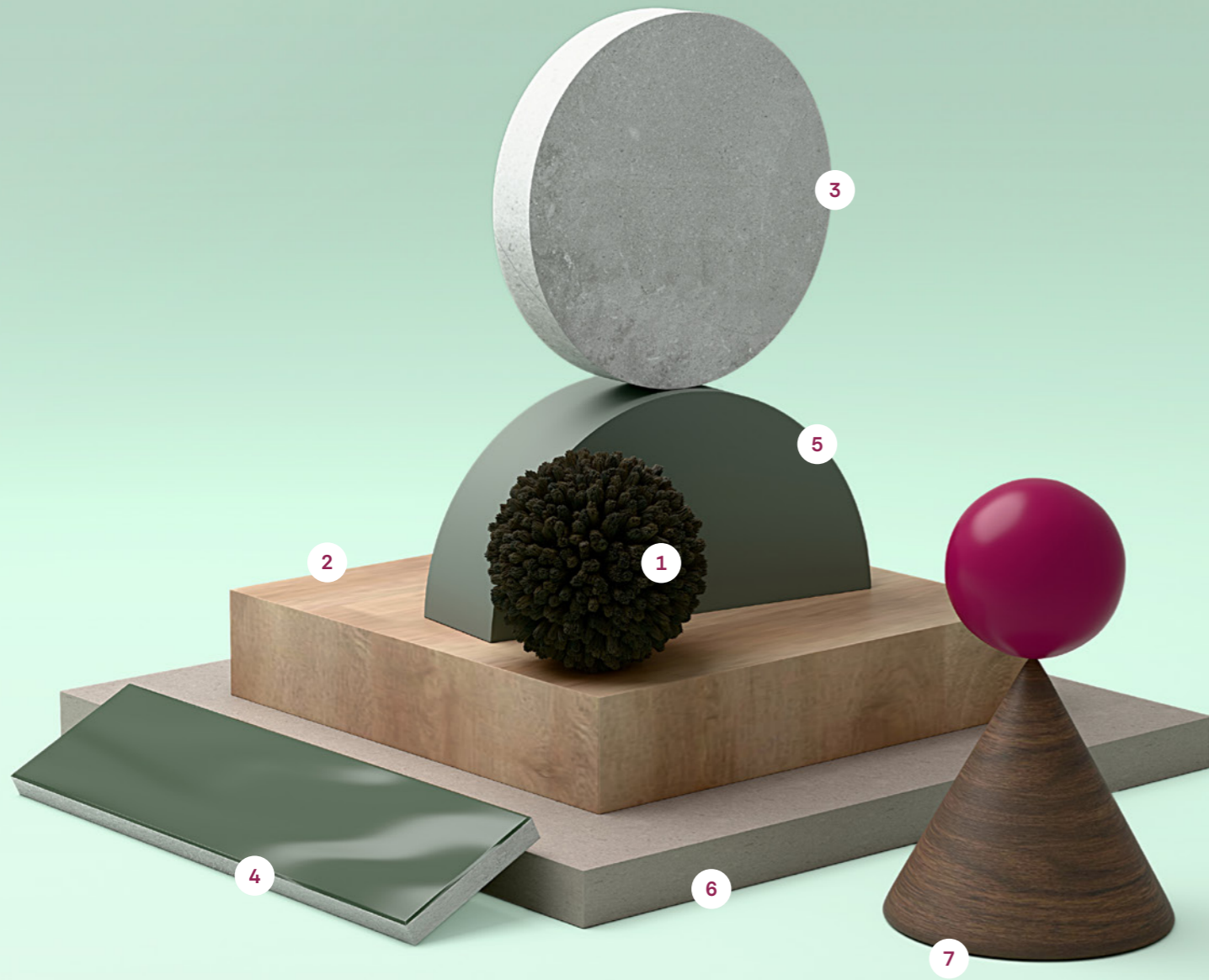
- 1 Carpet
Wild Dove
- 2 Timber Flooring
Otway
- 3 Floor & Wall Tile
Omniform Charcoal Matt Tile
- 4 Kitchen & Laundry Splashback
United White Satin Tile
- 5 Kitchen Joinery
Blackened Legno Laminex
- 6 Kitchen & Bathroom Benchtop
Caesarstone Ocean Foam

Internal Powder.



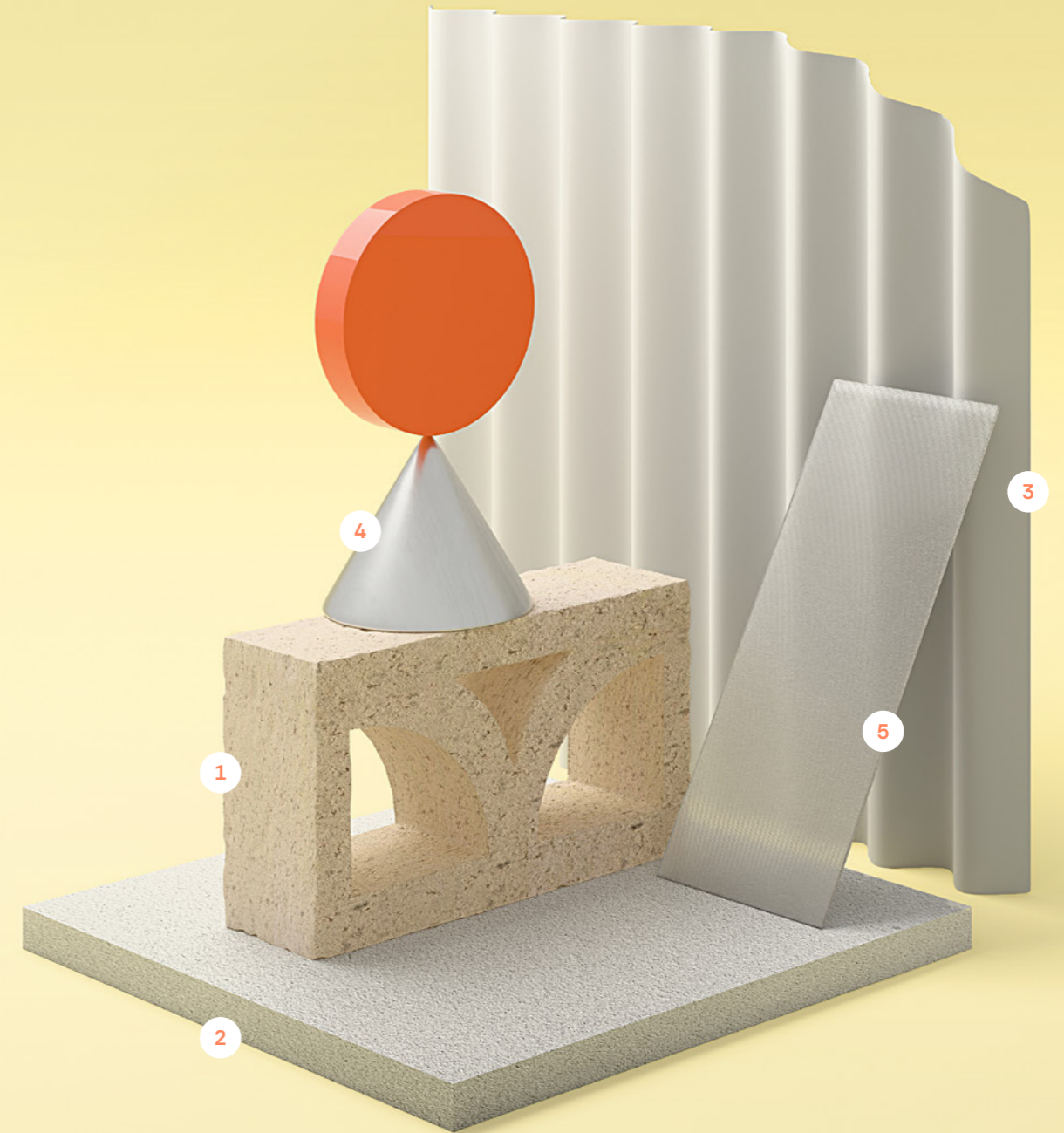
- 1 Carpet
Faded Lace
- 2 Timber Flooring
Apollo
- 3 Floor & Wall Tile
Omniform Beige Matt Tile
- 4 Kitchen & Laundry Splashback
United White Tile
- 5 Bathroom/Ensuite Joinery
Calm Oak
- 6 Kitchen & Bathroom Benchtop
Caesarstone Snow
- 7 Kitchen Joinery
White Natural

Internal Moss.



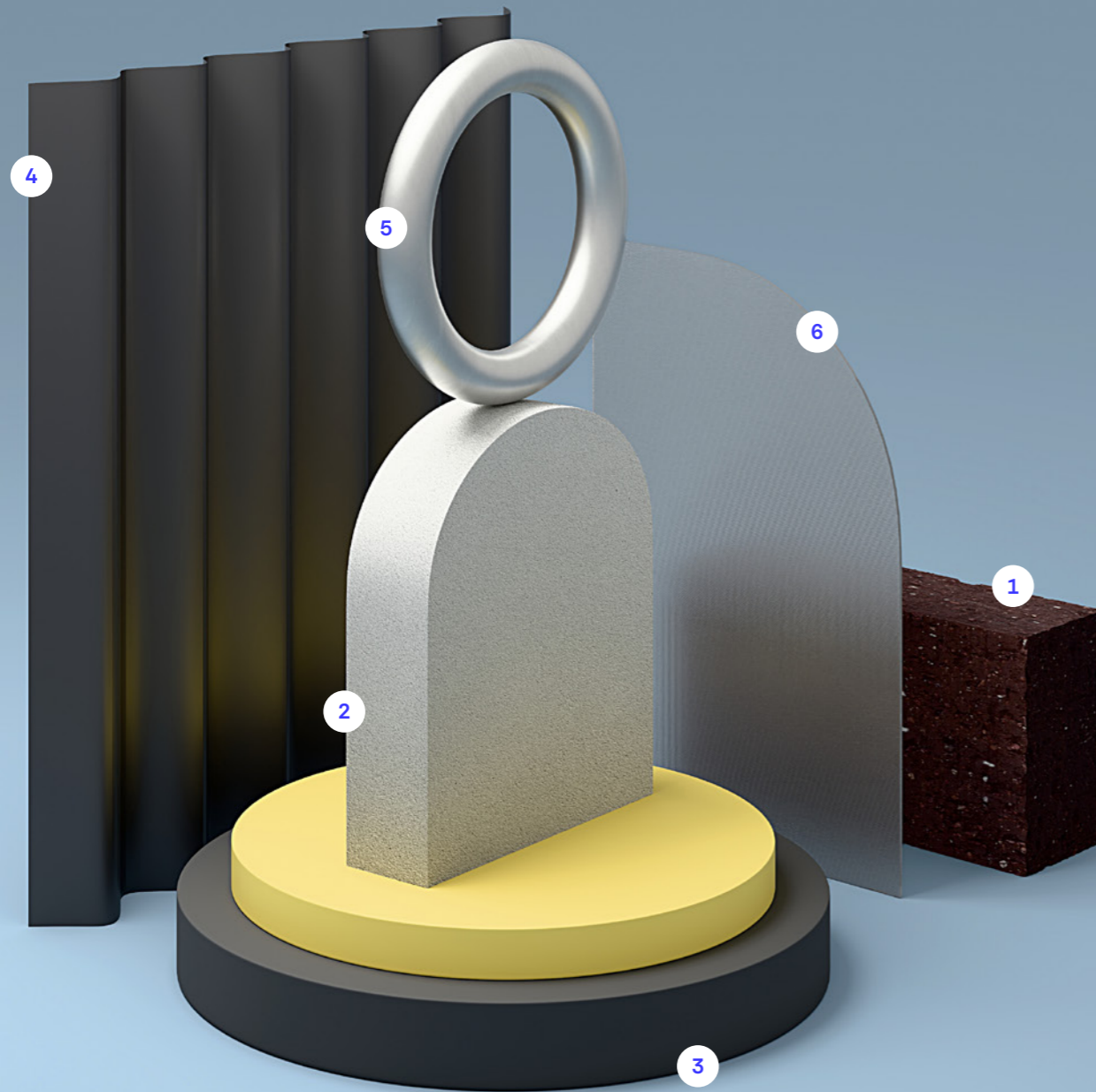
- | | | |
|-------------------------------|--|---|
| 1 Carpet
Forge | 3 Floor & Wall Tile
Omniform Grey Matt Tile | 5 Kitchen Joinery
Green Slate |
| 2 Timber Flooring
San Remo | 4 Kitchen & Laundry Splashback
Atmosphere Dark Green Tile | 6 Kitchen & Bathroom Benchtop
Caesarstone Oyster |
| | | 7 Drop Zone Joinery
Walnut |

External Cotton.



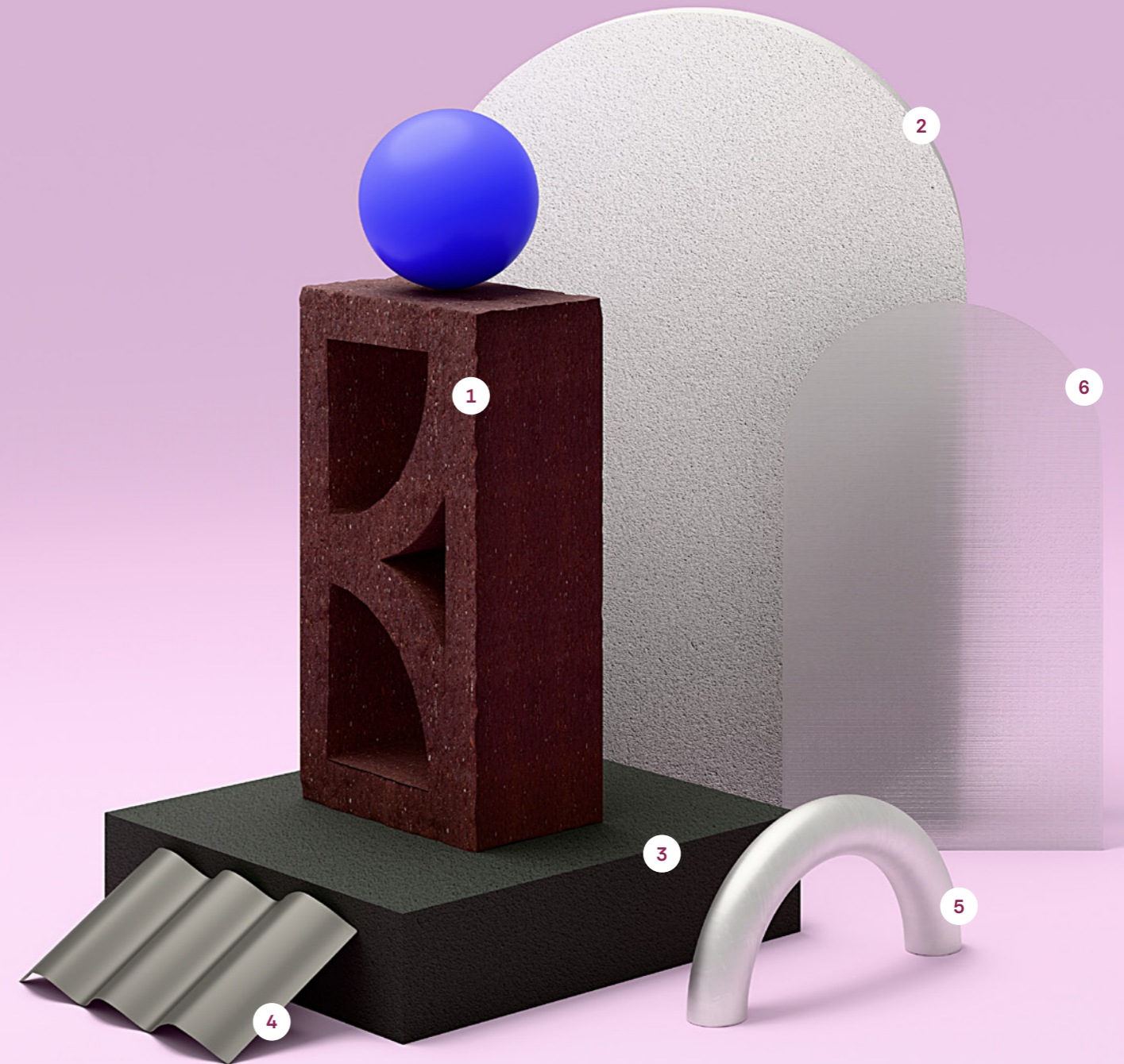
- | | | |
|--------------------------------|----------------------------------|------------------------|
| 1 Bricks
Austral Access Ash | 3 COLORBOND® Roof
Dover White | 5 Glazing
Satinlite |
| 2 Render
Lexicon Quarter | 4 Hardware
Satin Chrome | |

External Smoke.



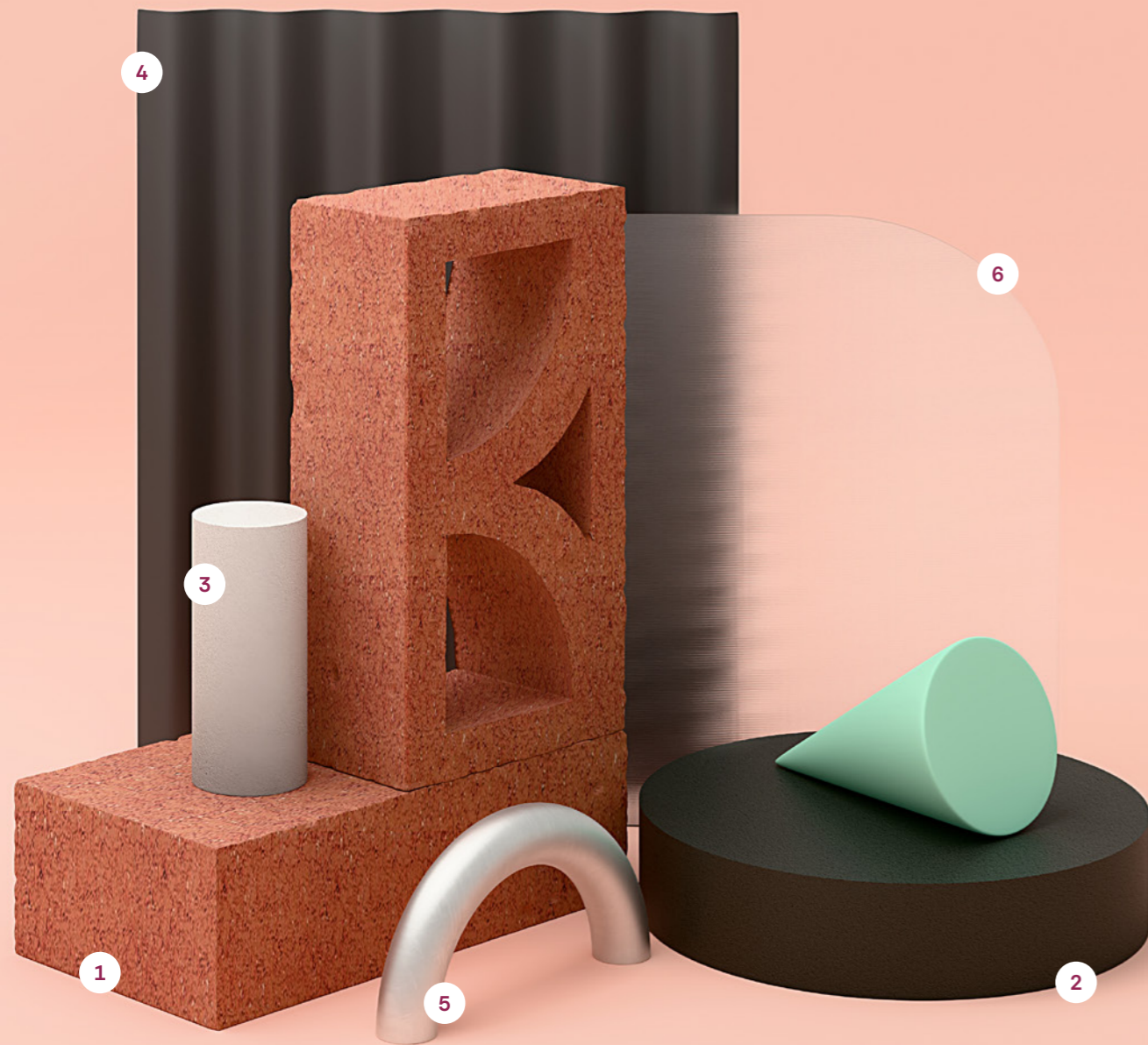
- | | | |
|--------------------------------|-------------------------------|----------------------------|
| 1 Bricks
Austral Access Tan | 3 Render
Dulux Monument | 5 Hardware
Satin Chrome |
| 2 Render
Dulux Stepney | 4 COLORBOND® Roof
Monument | 6 Glazing
Satinlite |

External Haze.



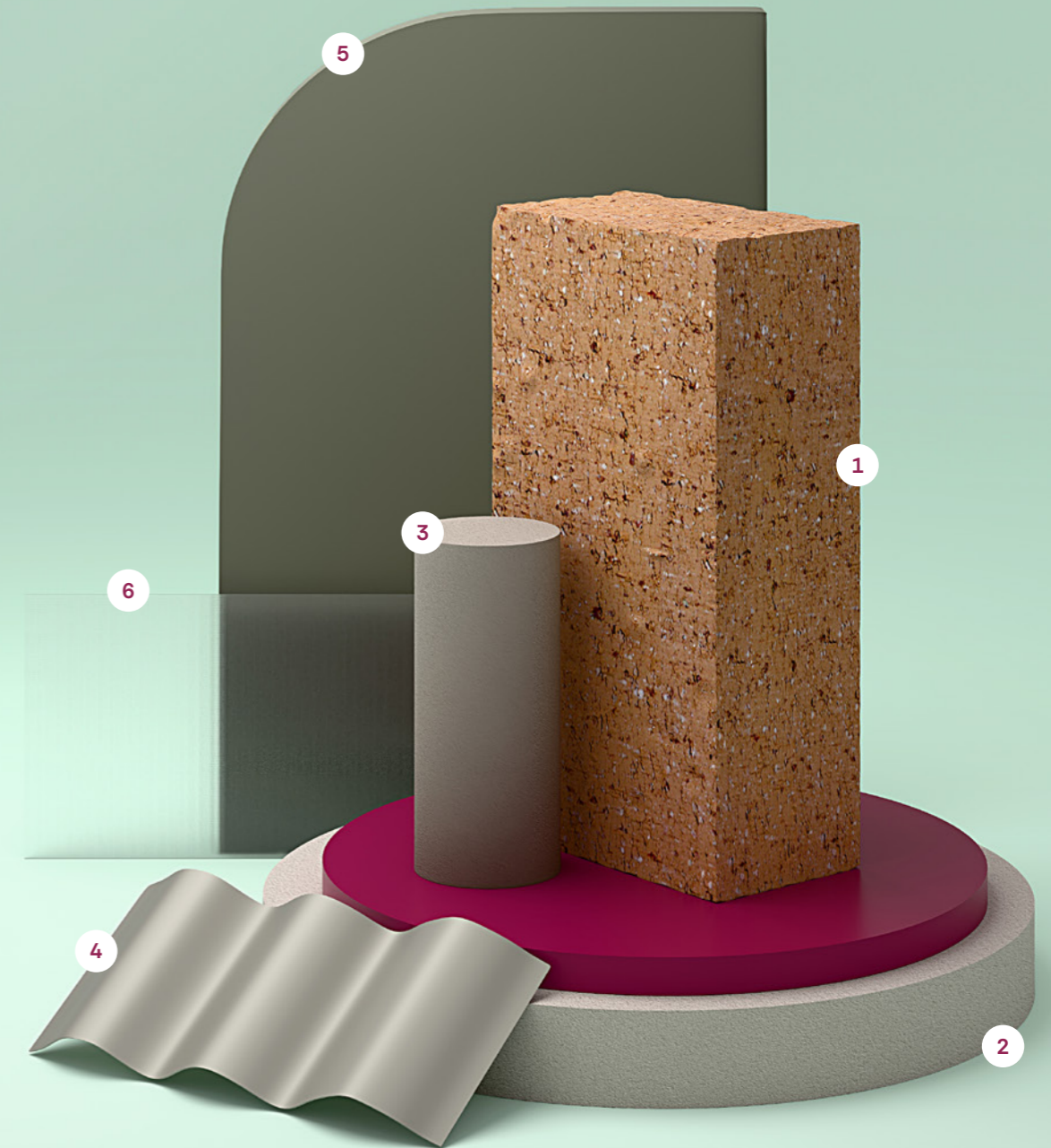
- | | | |
|----------------------------------|------------------------------|----------------------------|
| 1 Bricks
Austral Access Tan | 3 Render
Namadji | 5 Hardware
Satin Chrome |
| 2 Render
Snowy Mountains Half | 4 COLORBOND® Roof
Wallaby | 6 Glazing
Satinlite |

External Pebble.



- | | | |
|---------------------------------|-------------------------------|----------------------------|
| 1 Bricks
Austral Access Ruby | 3 Render
Lexicon Quarter | 5 Hardware
Satin Chrome |
| 2 Render
Dulux Monument | 4 COLORBOND® Roof
Monument | 6 Glazing
Satinlite |

External Meadow.



- | | | |
|--|---------------------------|------------------------------------|
| 1 Bricks
Austral Access Fawn | 3 Render
Dulux Dune | 5 Front Door
Dulux Jungle Cloak |
| 2 Render
Dulux Casper White Quarter | 4 COLORBOND® Roof
Dune | 6 Glazing
Satinlite |

Standard Inclusions

PRELIMINARIES

- Building permit fees
- 7-star energy report
- Home owners warranty insurance
- Architectural documentation & detailing
- Engineering computations & design
- Engineers soil report
- Feature site survey

SITE & SERVICES

- Termite treatment part A & part B
- Stormwater, sewer, gas & underground power connections
- Construction access drive (crushed rock) included up to 5 metres
- Temporary site fencing

FOOTINGS

- 'H1' class waffle pod concrete slab to house, garage, porch & alfresco

FRAMING

- Prefabricated pine wall frames
- Prefabricated pine roof trusses
- Noggins to bathroom & WC for future handrails

ROOFING

- Corrugated metal roof to main roof area as per drawings

CEILING HEIGHTS

- 2440mm high ceilings to single storey

BRICKWORK

- Clay bricks from builders standard range

ALFRESCO

- Plaster ceiling & concrete slab as per drawings

EXTERNAL PLUMBING

- COLORBOND® metal fascia, downpipes & quad slotted guttering
- External taps located at the water meter & 1 additional point to the rear of the home

HOT WATER SERVICE

- 280 litre heat pump

HEATING & COOLING

- Wall panel heater to all bedrooms (excl. bedroom 1)
- 5kW split system to living
- 3.5kW split system to MPR (if applicable)
- 2.5kW split system to bedroom 1

ELECTRICAL

- Double powerpoints throughout
- Downlights to main living areas as per drawings
- Internal batten light to the remainder of house
- External batten holders as per drawings
- Smoke detectors (direct wired with battery backup)
- Exhaust fans with external ventilation
- 3.5kW solar pack

INSULATION

- R2.5 batts to external wall & garage internal walls (excluding garage external walls)
- R6.0 batts to ceiling (excluding garage, porch & alfresco where applicable)

GARAGE

- Zero-threshold
- COLORBOND® sectional door
- Motor to garage door (including 2 no. handsets)

DOORS

- Front entry door with feature clear glazed panel
- Solid core external hinged door
- 870mm wide internal hinged access door
- Aluminium sliding doors
- 2040mm high internal doors

DOOR FURNITURE

- Chrome passage set & deadbolt to front entry door & garage internal door
- Chrome entrance set to garage external door
- Chrome passage set to internal doors
- Chrome privacy set to all wet rooms
- Chrome dummy set to storage doors
- Weatherstrip seal to front entry door & brush seal to garage internal hinged door
- Door stops to all internal doors

WINDOWS & GLASS DOORS

- Aluminium windows
- Locks to all openable windows

PLASTER

- 10mm plaster sheets throughout
- 75mm cove cornice throughout including garage

INTERNAL WOODWORK

- 67mm x 12mm square edge architraves
- 67mm x 12mm square edge skirting

PAINT

- 3 coat finish to internal walls, ceilings & woodwork

FLOOR COVERINGS

- Cut twist pile carpet from builders standard range to locations as per drawings
- Timber look laminate flooring from builders standard range to locations as per drawings

TILING

- Ceramic floor tiles from builders standard range to bathroom, ensuite, laundry, powder & WC
- Ceramic wall tiles from builders standard range to kitchen, bathroom, ensuite, laundry, powder & WC

KITCHEN – INCLUDING PANTRY (IF APPLICABLE)

- 20mm mineral surface stone benchtop from builders standard range
- Laminate cabinets
- Pantry with 4 no. Melamine shelves
- Reverse bevel concealed finger pulls to base cabinets
- Extended doors to lower edge as finger pull for overhead cupboards
- Tile splashback
- Chrome gooseneck sink mixer
- Double bowl undermount sink in stainless steel to kitchen (design dependent)
- Franke 600mm multifunction black glass oven
- Franke 600mm black glass induction cooktop
- Fisher&Paykel 600mm canopy rangehood including external venting
- Dishwasher provision

BATHROOM & ENSUITE

- 20mm mineral surface stone benchtop from builders standard range
- Laminate cabinets
- Reverse bevel concealed finger pulls to base cabinets
- Polished edge mirror
- Insert basin
- 1500mm back to corner freestanding bath
- Close coupled toilet suite
- Raised tiled shower base & chrome 2000mm semi-framed pivot screen to ensuite
- Flush tiled shower base & chrome 2000mm semi-framed pivot screen without track to bathroom
- Chrome basin mixer, shower mixer, bath wall sprout & shower on rail

LAUNDRY

- Stainless steel trough & white acrylic cabinet
- Mini stops for washing machine
- Chrome mixer tap

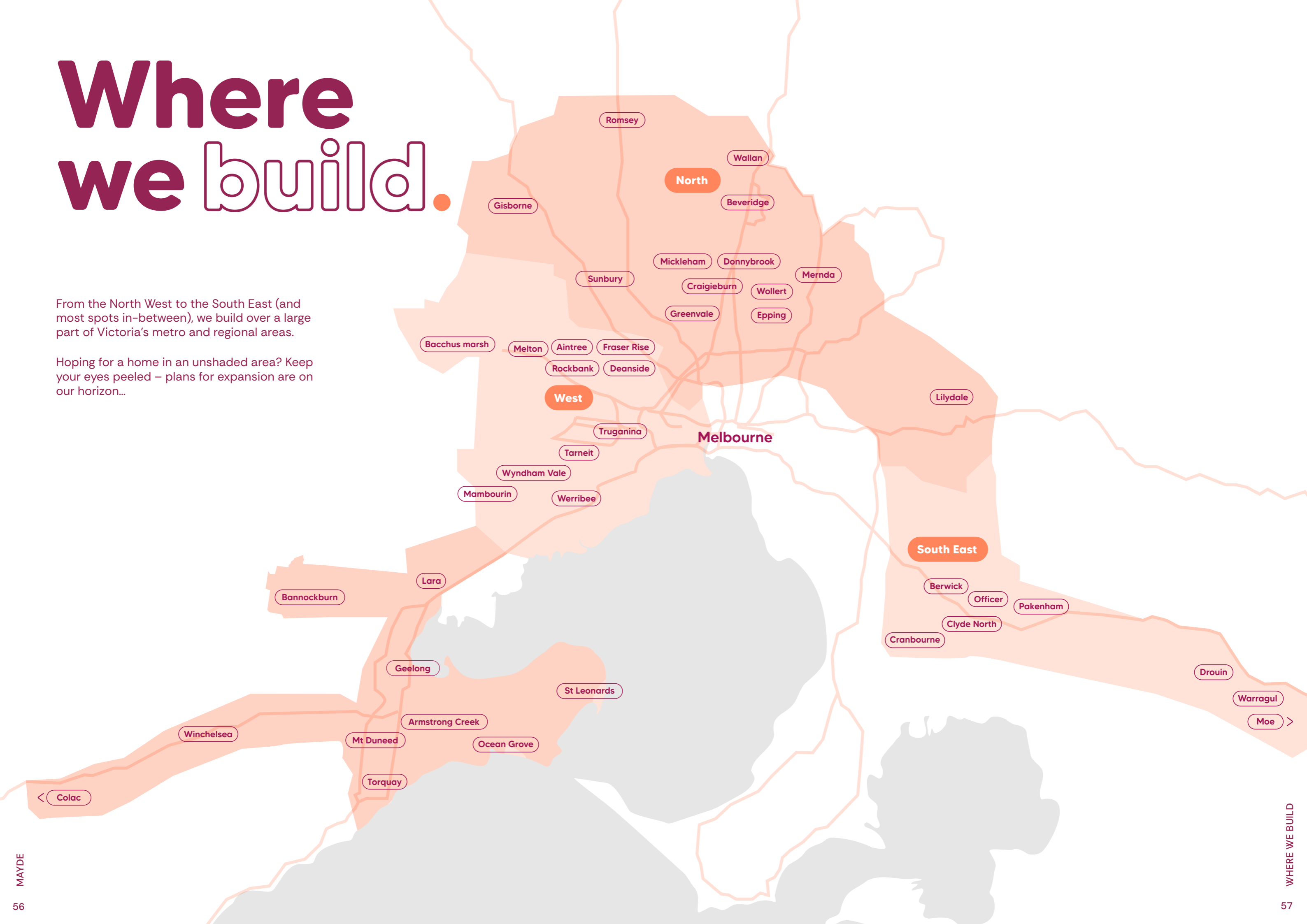
ROBES & CUPBOARDS

- Robes with Melamine shelf & hanging rail
- Vinyl sliding doors to robes
- Linen cupboard with 4 no. Melamine shelves
- Broom cupboard with 1 no. Melamine shelf
- Coat cupboard with 1 no. Melamine shelf & hanging rail (design dependent)

Where we build.



From the North West to the South East (and most spots in-between), we build over a large part of Victoria's metro and regional areas.

Hoping for a home in an unshaded area? Keep your eyes peeled – plans for expansion are on our horizon...



mayde.

Discover a life mayde
maydehomes.com.au

 @Mayde
 @mayde_homes