

Bodhi

Geometric

\$570,565

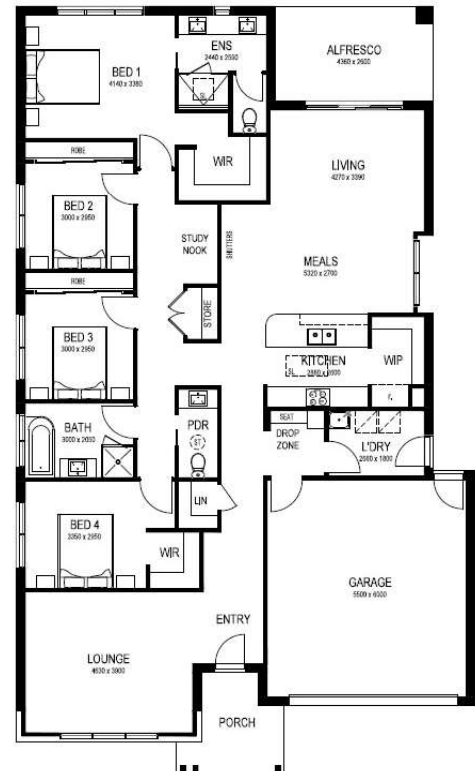
Lot 61 Redgum Court, Colac



BED	4	HOUSE SIZE	25.69sq
BATH	2.5	FRONTAGE	14m
GARAGE	2	LAND SIZE	392m2

INCLUSIONS

- Fixed site costs & developer guidelines
- 7-star energy guaranteed on all orientations
- Colorbond roof
- Water resistant laminate & upgraded carpet throughout
- 20mm mineral surface benchtops to kitchen & bathrooms
- All electric & 3.5kw solar included
- LED downlights to all living areas
- Three split systems & entire home heating



mayde.

Doklea Ibrahimimi

doklea.ibrahimi@maydehomes.com.au

0457 426 593



31/01/2025

Image for illustrative purposes only. Pricing excludes landscaping, fencing, driveway. Floorplan areas may vary slightly in size depending on facade selection. Floorplans shown are not to scale. Floorplan may be mirrored to suit garage crossover location. Subject to Developer approval. Price effective for 1 month from date of issue.